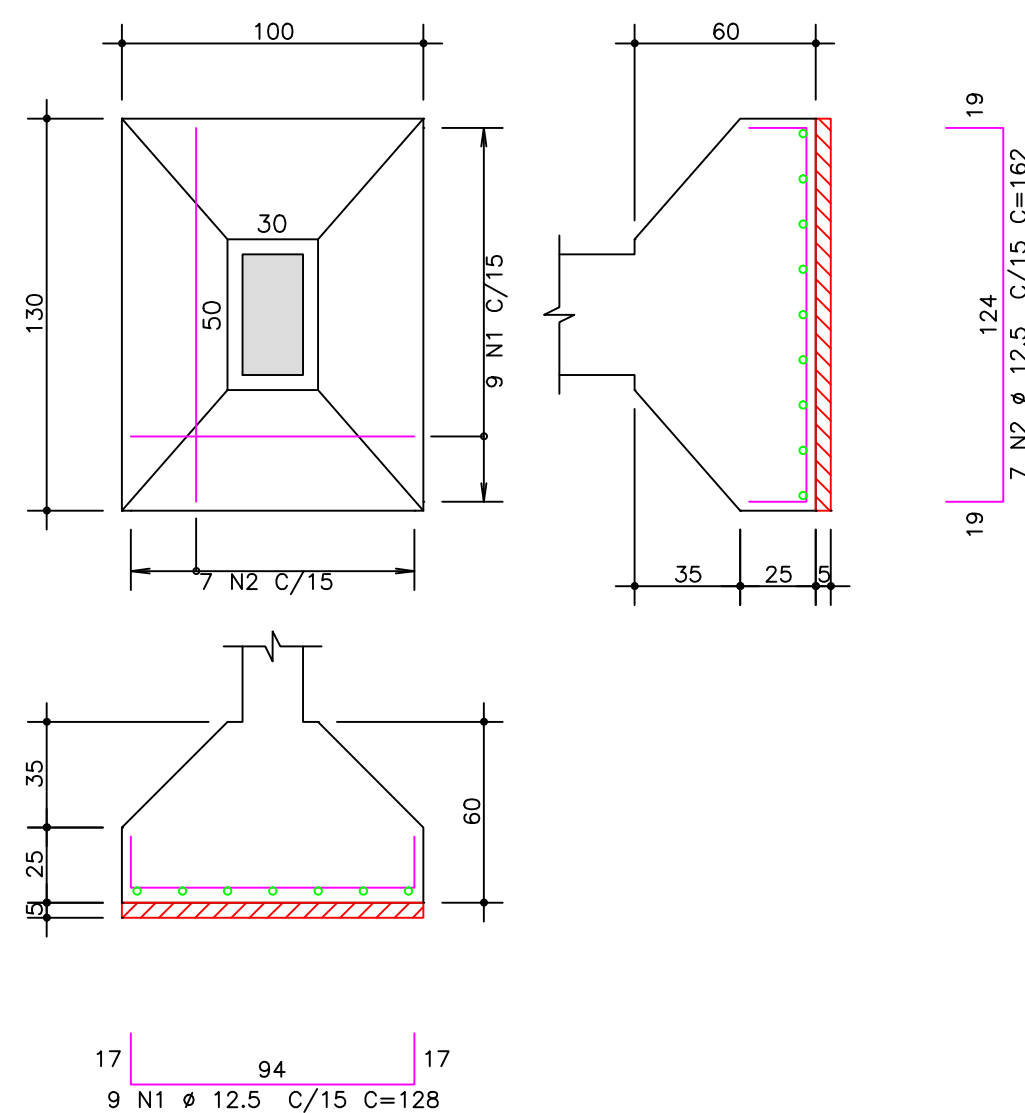
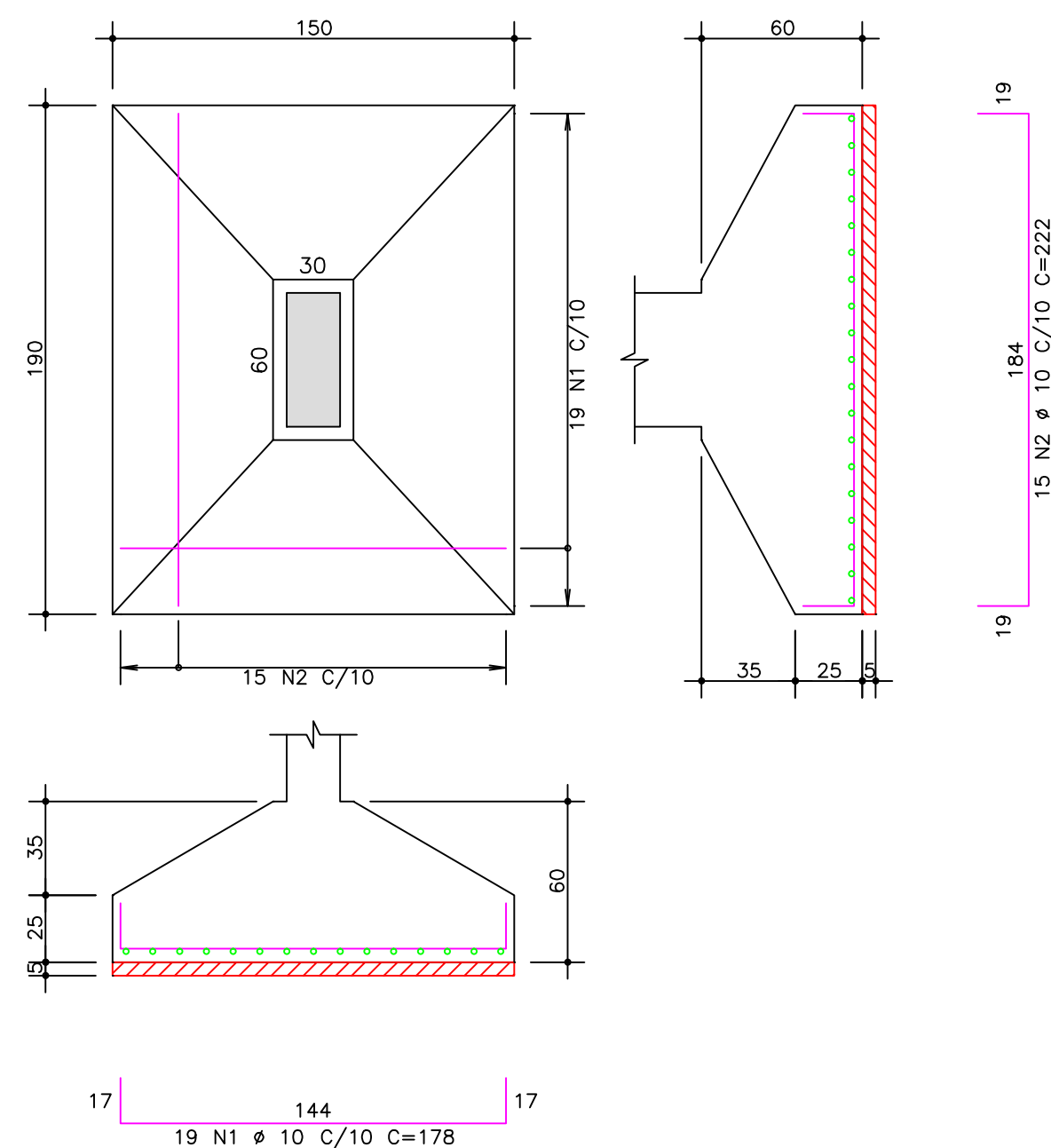


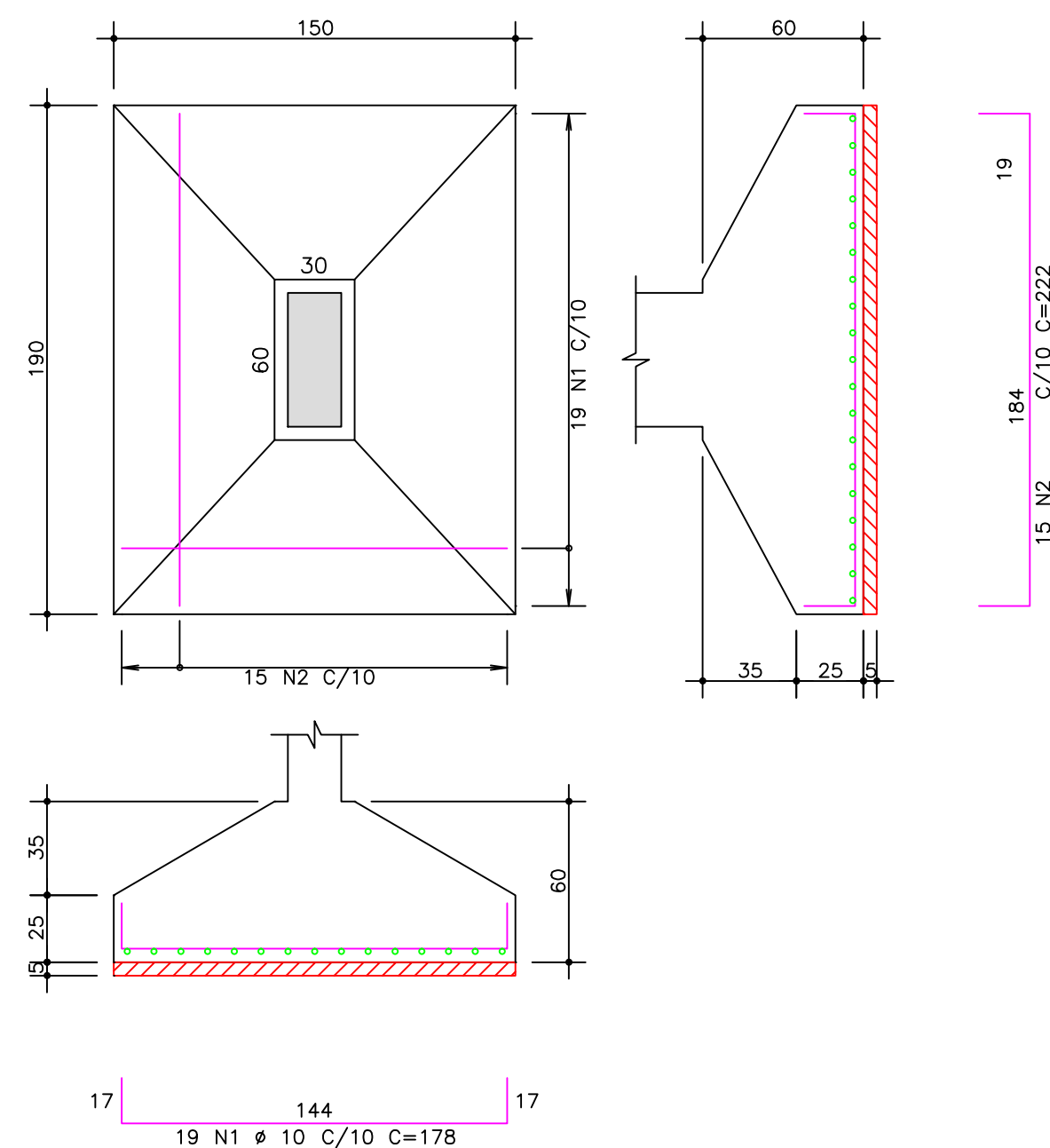
S3=S4=S5=S6=S8=S9=S11=S14=S15=S18=S20=S21=S22=S23=S24=S29=S30=S44=S45=S46
(ESCALA 1:25)



S50
(ESCALA 1:25)

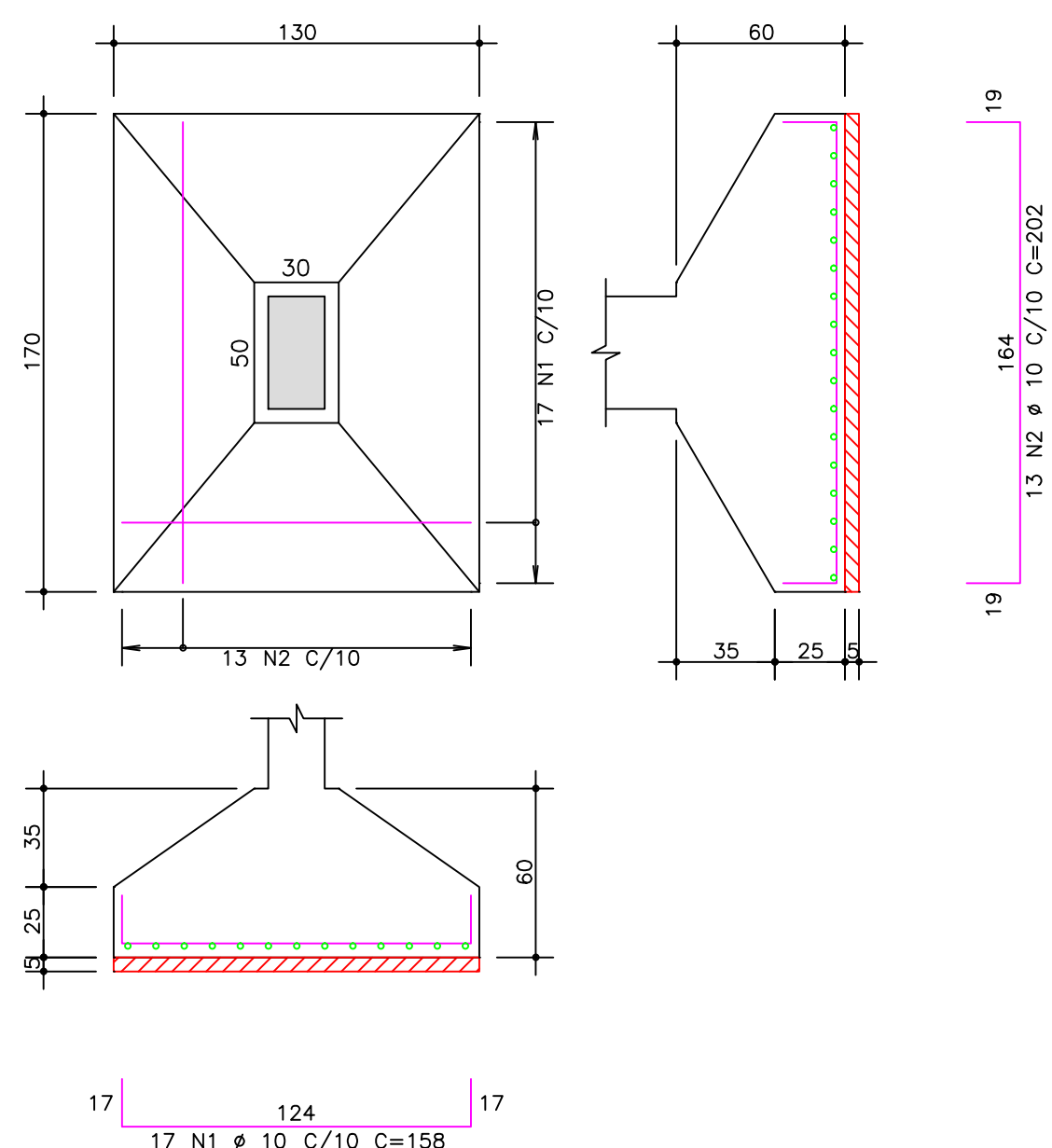


S51
(ESCALA 1:25)

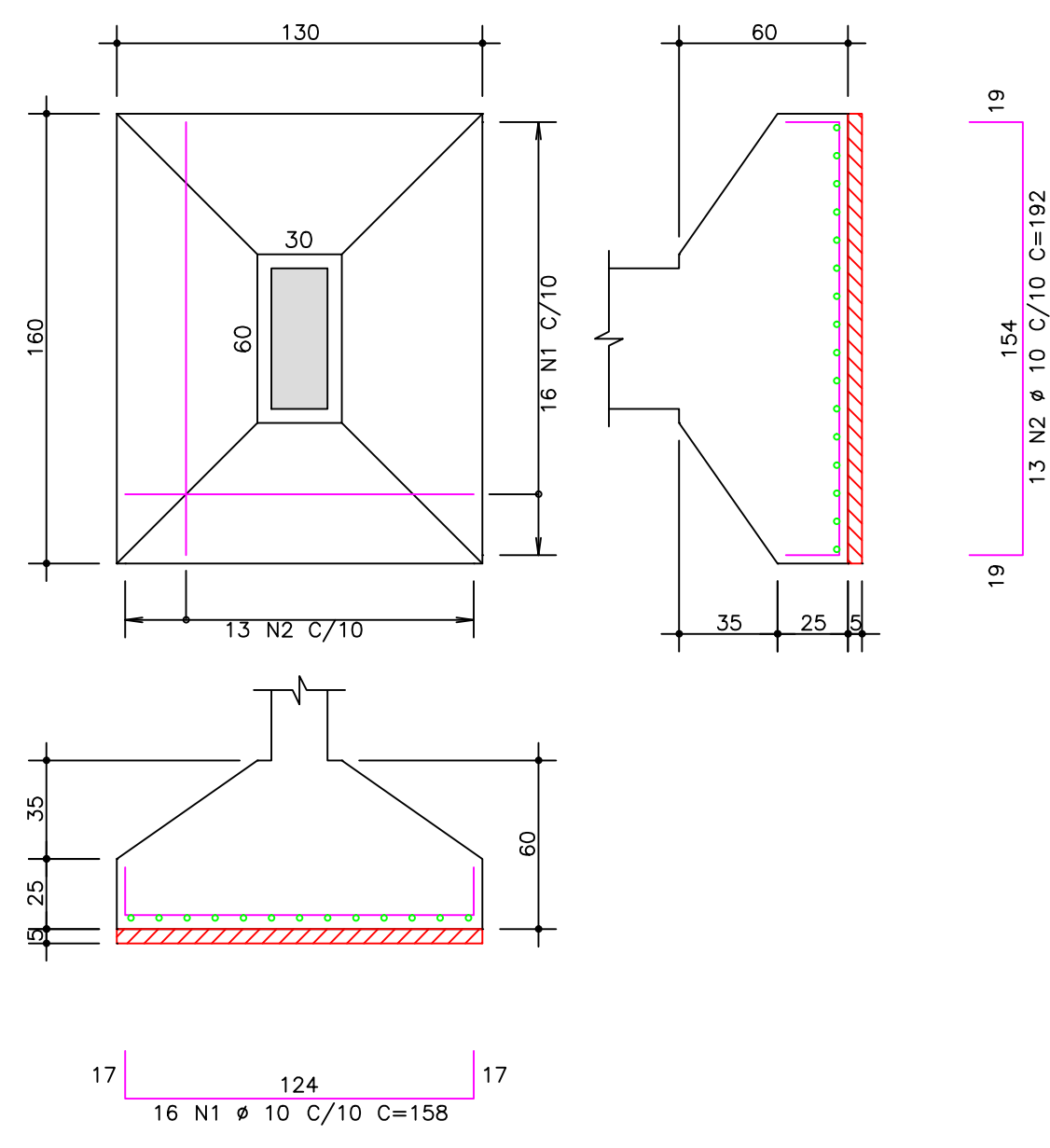


AÇO	POS	BIT (mm)	QUANT	COMPRIMENTO	
				UNIT (cm)	TOTAL (cm)
S3=S4=S5=S6=S8=S9=S11=S14=S15=S18=S20=S21=S22=S23=S24=S29=S30=S44=S45=S46 (X20)					
S12	50A	1	12,5	180	128 23040
	50A	2	12,5	140	162 22680
	50A	1	12,5	10	143 1430
	50A	2	12,5	8	177 1416
S13					
50A	1	2	12,5	11	148 1628
			10	12	182 2184
S19=S28=S34=S41 (X4)					
50A	1	1	12,5	40	138 5520
	50A	2	10	44	172 7568
S25					
50A	1	2	10	18	158 2528
			10	14	192 2496
S37=S16 (X2)					
50A	1	1	12,5	22	153 3366
	50A	2	12,5	18	187 3366
S39					
50A	1	2	12,5	10	148 1480
			10	12	172 2064
S43					
50A	1	2	10	16	158 2528
	50A	2	10	19	138 2496
S48=S49 (X2)					
50A	1	2	10	34	158 5372
	50A	2	10	26	202 5252
S50					
50A	1	2	10	19	178 3382
	50A	2	10	15	222 3330
S51					
50A	1	2	10	19	178 3382
	50A	2	10	15	222 3330
RESUMO AÇO CA 50-60					
AÇO	RESUMO	COMPR	PESO		
	(mm)	(m)	(kg)		
50A	10	459	283		
50A	12,5	639	616		
Peso Total		50A =	899 kg		

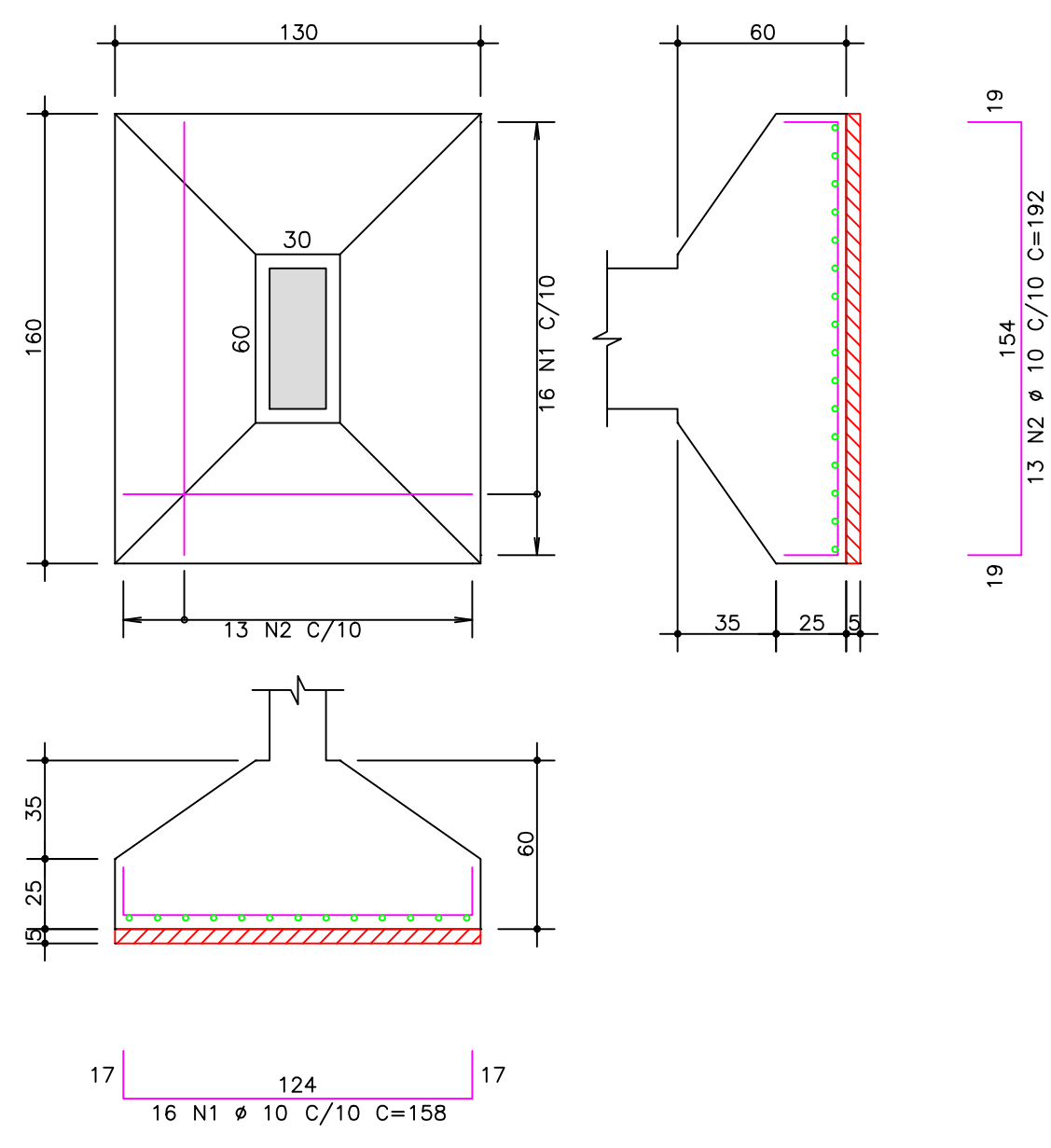
S48=S49
(ESCALA 1:25)



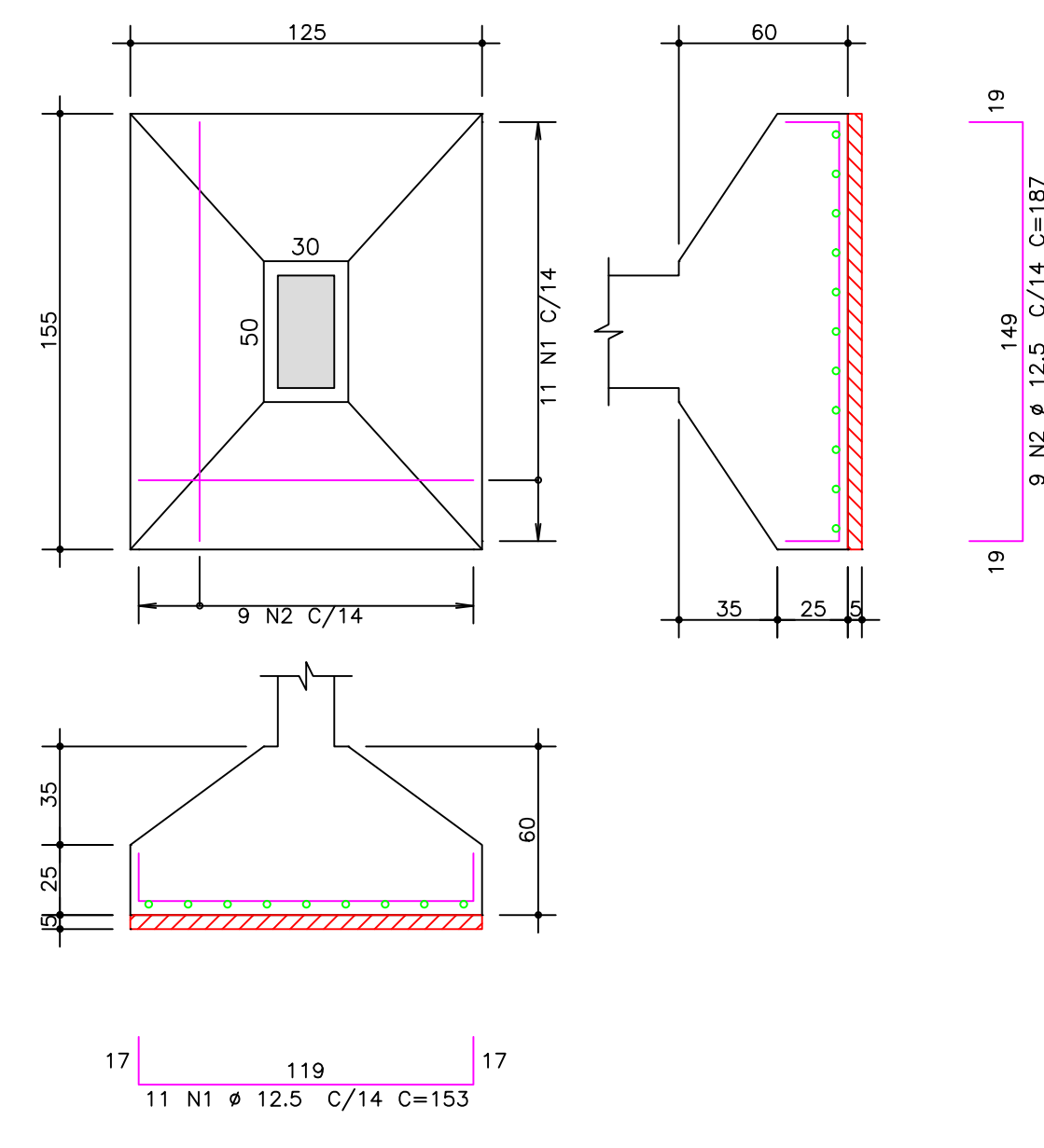
S25
(ESCALA 1:25)



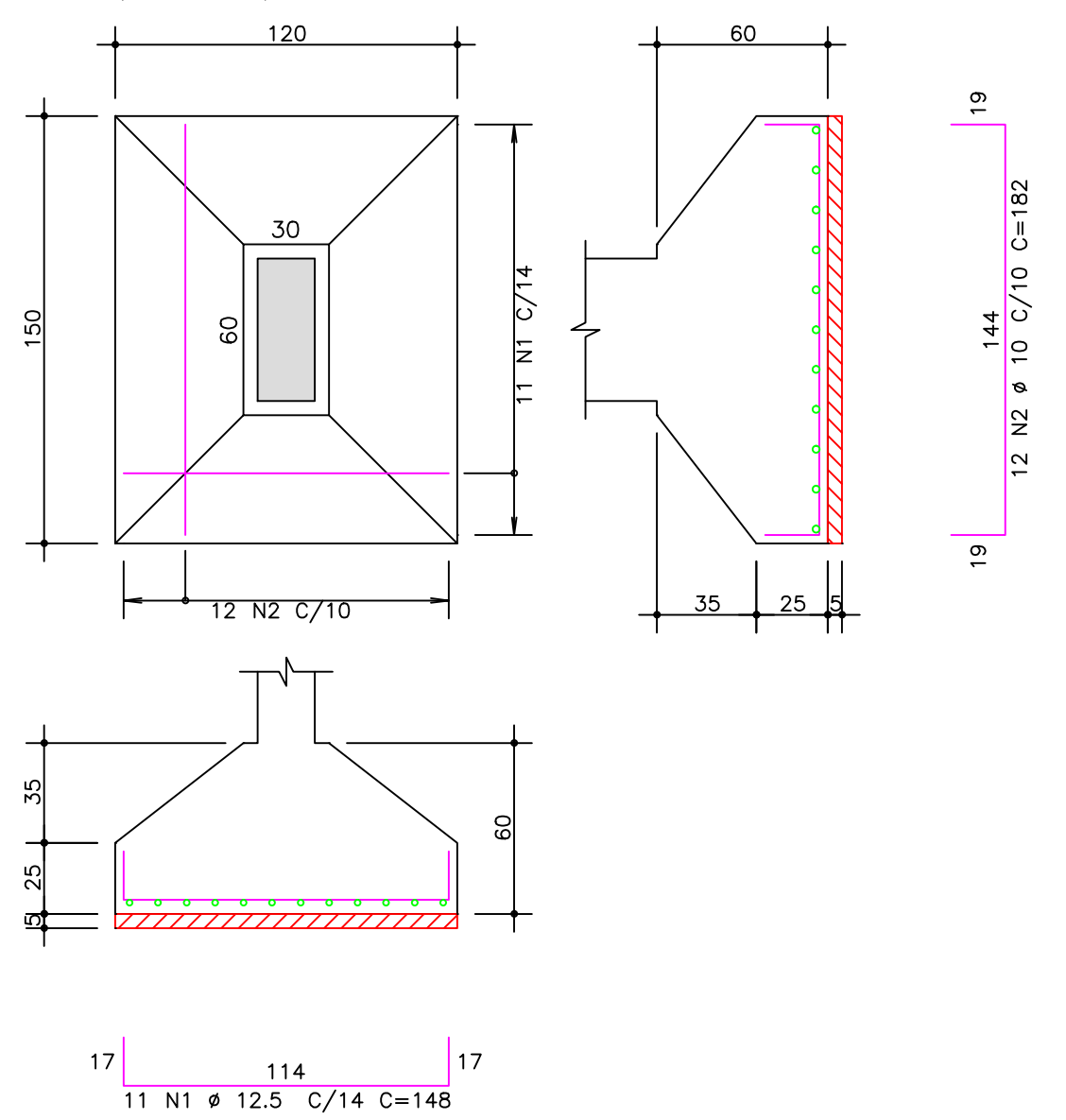
S43
(ESCALA 1:25)



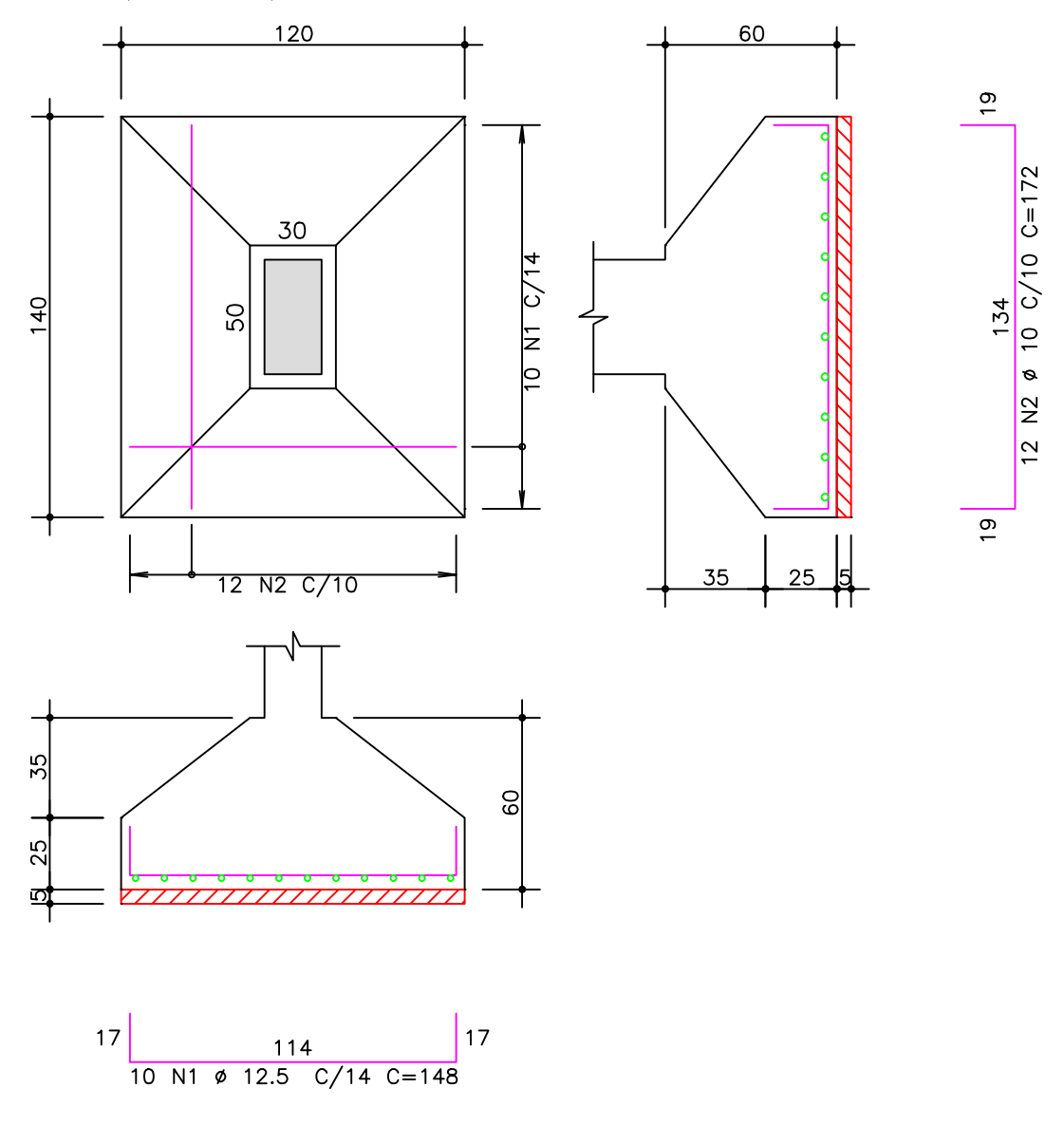
S37=S16
(ESCALA 1:25)



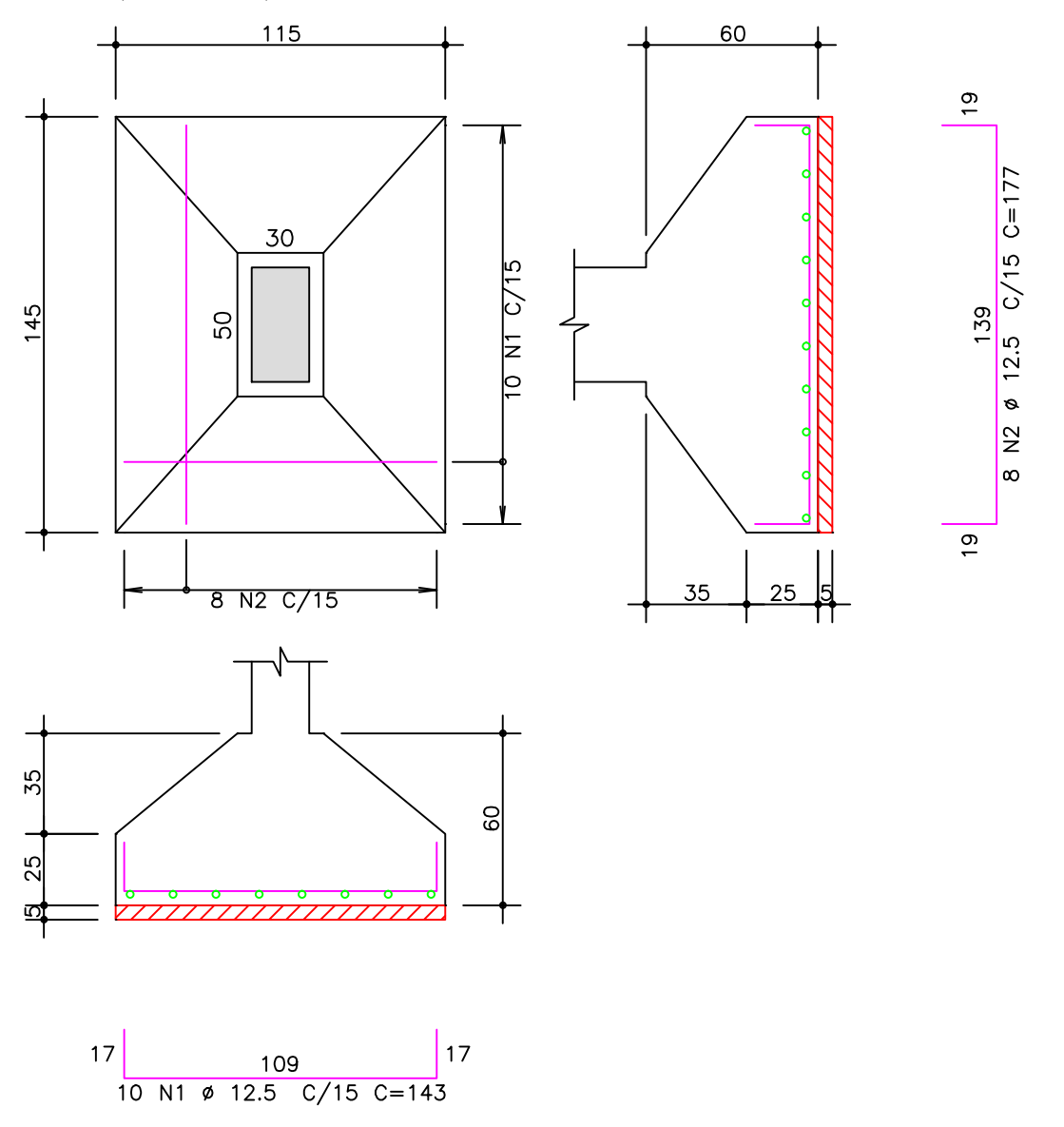
S13
(ESCALA 1:25)



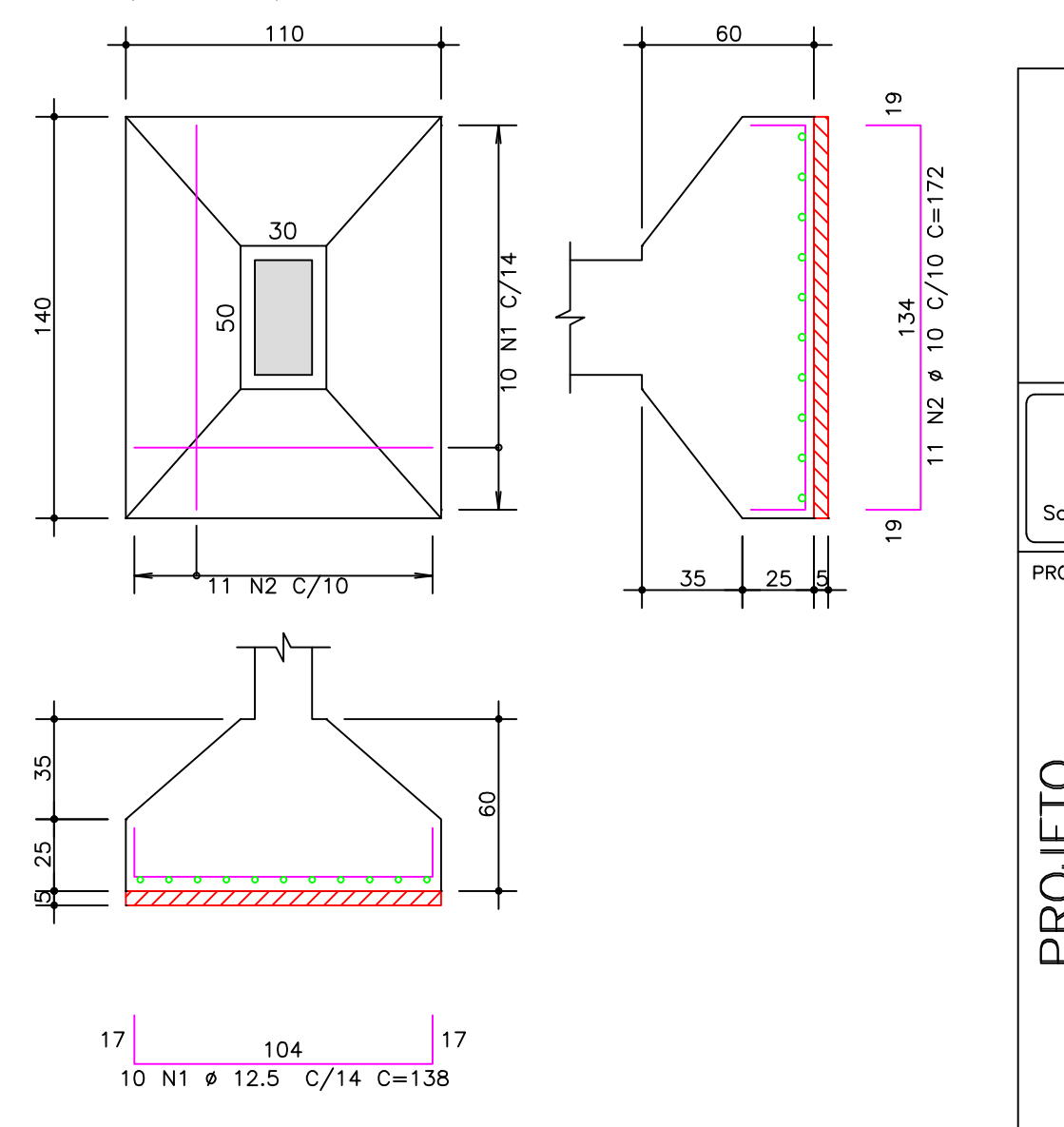
S39
(ESCALA 1:25)



S12
(ESCALA 1:25)



S19=S28=S34=S41
(ESCALA 1:25)



O acesso ao Modelo Estrutural em dimensão pode ser executado pelo QR CODE ao lado, podendo acessar via celulares, tablets e quaisquer outros dispositivos.



Schuring & Schuring Ltda. Escritório Técnico B.E.SCHURING - Projetos de Engenharia Av. XV de Novembro, 489 - Porto 2o. Andar - Cuiabá MT Fone:(065) 321 9959 - Fax:(065) 623 5066 - Email - schuring@terra.com.br	
PROJETO: PROPRIETÁRIO: PREFEITURA MUNICIPAL VARZEA GRANDE MT	OBRA: PREFEITURA MUNICIPAL DE VARZEA GRANDE MT
RESP. TEC. EXECUÇÃO:	Unid. Básica de Saúde UBS-MATILDE CURVO DE MORAES
AUTORES DO PROJETO: Eng. Civil B. E. Schuring, Eng. Civil A. L. Schuring	END.: Av. dos Bandeirantes, Conj. Habit. José Carlos Guimarães, Várzea Grande-MT
ASSUNTO: SAPATAS DET ARM FUNDAÇÃO	PECAS DETALHADAS: S3=S4=S5=S6=S8=S9=S11=S14=S15=S18=S20=S21=S22=S23=S24=S29=S30=S44=S45=S46 S12 / S13 / S19=S28=S34=S41 / S25 S37=S16 / S39 / S43 / S48=S49 / S50 S51
FOR: ESCALA: 1:50	DATA: 15/07/2019
FOLHA No. 05	